

SSH for Windows Users

Jemmy Hu
SHARCNET HPC Analyst

1. SSH

Secure Shell is a program to logon into another computer over a network. SSH is available for Windows, Unix/Linux, and Macintosh. For Windows users, a copy of SSH executable is available from <http://www.sharcnet.ca/~jemmyhu/>

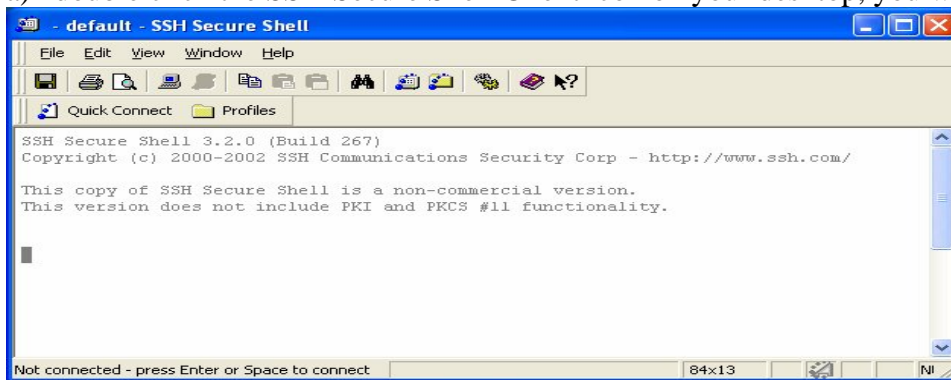
(It was downloaded from <http://ftp.ssh.com/pub/ssh/SSHSecureShellClient-3.2.9.exe>)

It comes with SSH Secure Shell Client and Secure File Transfer Client.

Also, there are other tools such as PuTTY (<http://www.putty.nl/>) available for Windows.

Logon to SHARCNET cluster from Windows:

a) double click the SSH Secure Shell Client icon on your desktop, you will have a new window



b) click the 'Quick Connect' on top of the banner bar, the pop-up window is



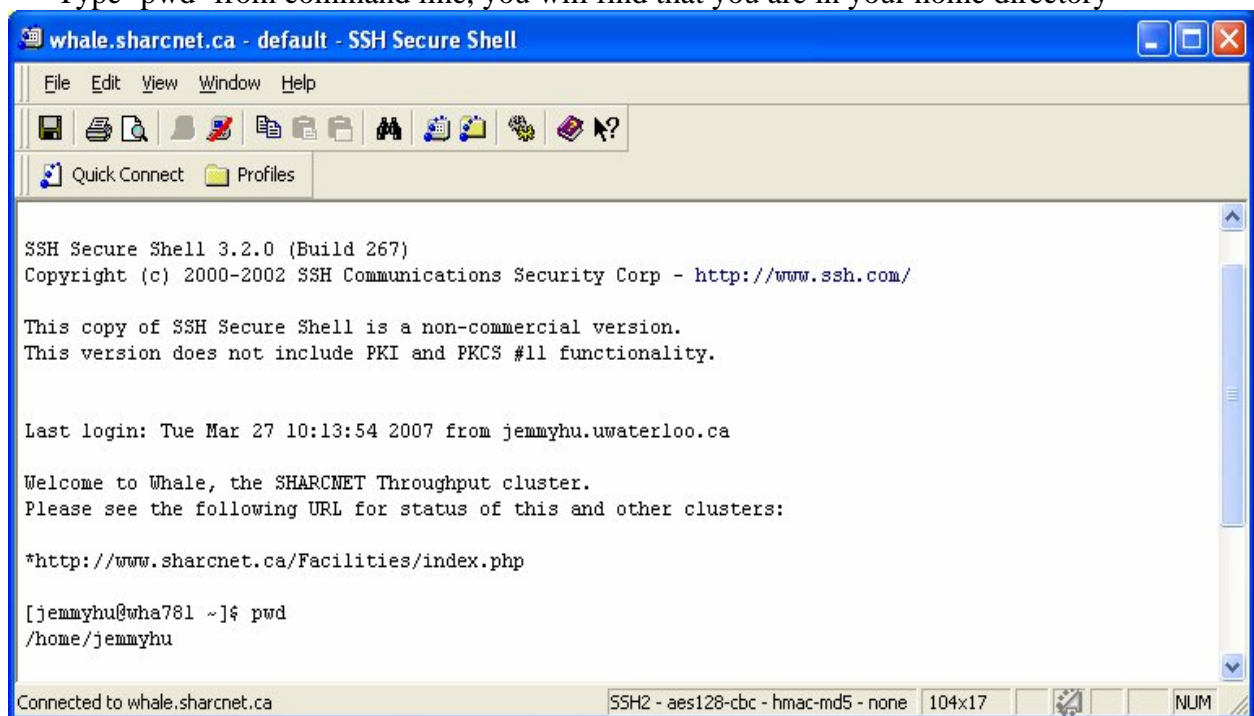
c) enter the machine domain name and your username, such as whale.sharcnet.ca



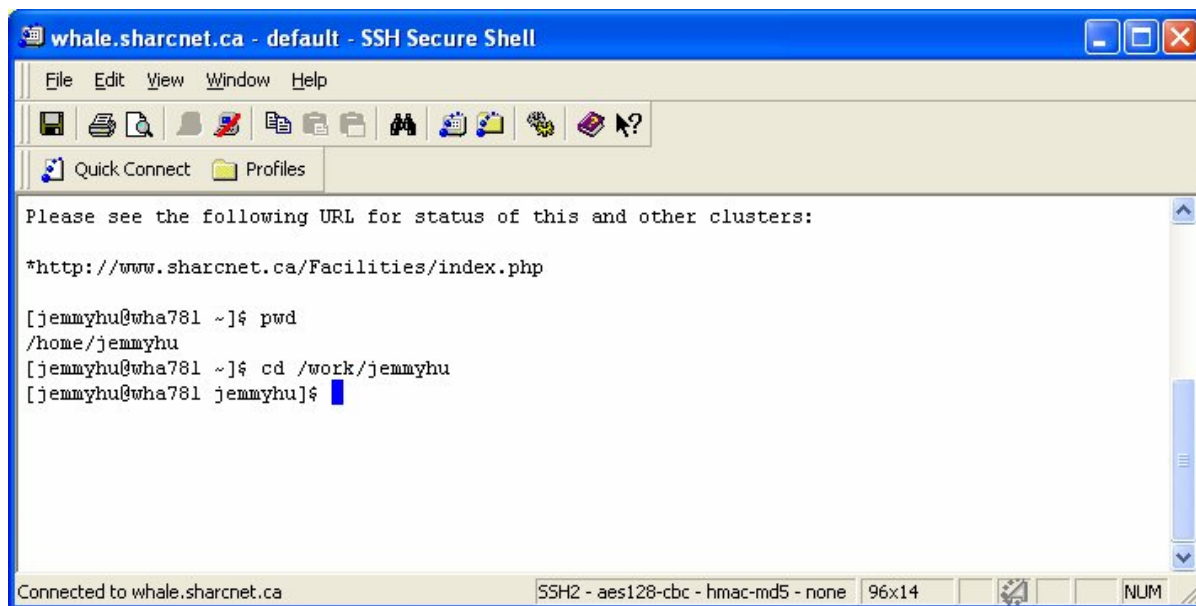
d) click 'Connect' button, a window will be up for Password



e) enter your Password and click 'OK', if succeeded, you have logged on the remote machine.
Type 'pwd' from command line, you will find that you are in your home directory



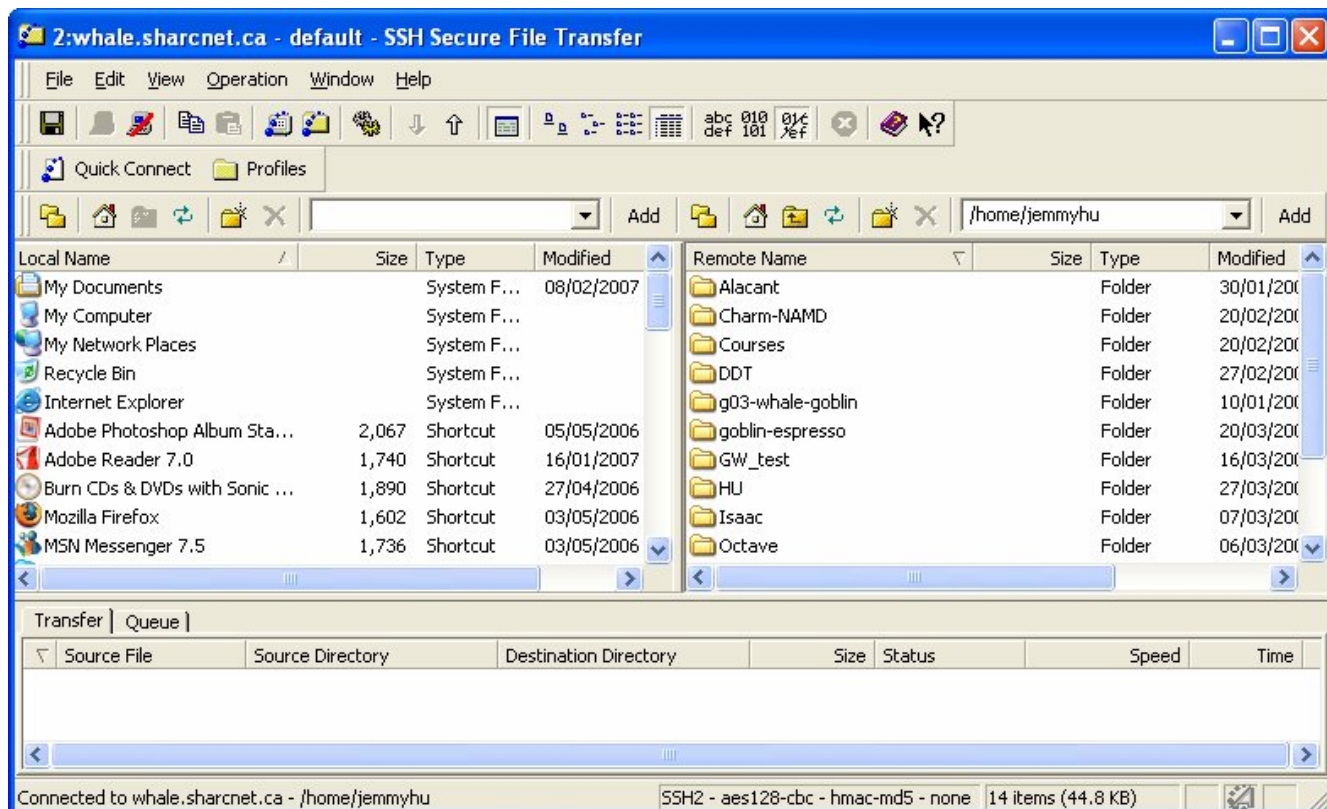
f) Type 'cd /work/username' to go to your work directory



SSH File Transfer:

You should have a SSH Secure File Transfer Client icon together with SSH Secure Shell Client icon on your Windows once you installed SSH software. You can click that icon to start SFTP, or simply click the SSH FTC icon on the SSH login window shown below

- a) click the SSH FTC icon on the top banner of the terminal window (4th from the right), it will pop-up a new window like the following



The left are all files on your Windows PC, the right are the files in your home directory on the remote cluster.

- b) specify your directory (modify the right-up window with `‘/home/username’`), and move your file from your PC to the cluster by simply drag the icon from left (PC) to right(cluster).
- c) if done, close the FTC window